

# Air Force Installation & Mission Support Center

---



## Wurtsmith Restoration Advisory Board Meeting

17 November 2021

AFCEC/CIB

---

*Your Success is Our Mission!*



# Checklist for Virtual Participation

- ✓ **If you prefer to join audio by phone, please dial the call in number and enter the access code to enter the meeting.**
  - Enter \*9 to raise and lower your hand
- ✓ **RAB Members - mute when not speaking and turn on your video camera if you are able.**
- ✓ **Use “raise hand” to raise your hand**
- ✓ **To enable closed captions for language support, click “live transcript” then “show subtitle”**
- ✓ **Use Q&A tab for questions**
- ✓ **Contact the RAB Coordinator with access questions**  
[rabcoordinator@aerostar.net](mailto:rabcoordinator@aerostar.net)



# RAB Rules

<b>01</b>	<b>Respect one another and maintain an atmosphere of open dialogue and exchange of ideas</b>
<b>02</b>	<b>Use our time together efficiently, wisely and respectfully</b>
<b>03</b>	<b>Speak clearly and succinctly one person at a time; avoid interrupting others</b>
<b>04</b>	<b>Listen and remain open to different points of view</b>
<b>05</b>	<b>Maintain a propensity for progress: prepare, discuss, document and move forward</b>
<b>06</b>	<b>Share information early, openly and honestly</b>
<b>07</b>	<b>Accurately and objectively relay to others the discussions that occur at board meetings</b>



# Agenda

- **Welcome and introduction**
- **Stakeholder and RAB member updates**
- **RAB business update**
- **Remedial investigation (RI), interim remedial actions (IRAs) and soil removal action**
- **RAB and public questions/public comment**
- **Conclusion - RAB Co-Chairs' closing remarks**



# Welcome and Introductions

## ■ Public comment procedure

- To indicate that you'd like to make public comment, chat the host, use the Q&A tab or email Tim Sueltenfuss [tim@galendriscol.com](mailto:tim@galendriscol.com)

- 3 minutes per person

## ■ RAB participation

- Indicate you'd like to speak by clicking "raise hand"
- Please wait to be called on by the moderator
- Please provide your name before you begin your question or comment
- Be patient and kind please

## ■ Email tech questions to: [rabcoordinator@aerostar.net](mailto:rabcoordinator@aerostar.net)

- For questions please use the Q&A tab



# *Former Wurtsmith AFB RAB*



# Stakeholder Updates



# Air Force Update

## ■ New Team Members





# Stakeholder Updates



Community RAB  
Members







# Stakeholder Updates





# *Former Wurtsmith AFB RAB*



# RAB Business



# **RAB Business**

- **Operating procedures**
- **Action items**



# *Former Wurtsmith AFB RAB*



## **Presentation:**

# **USAF Remedial Investigation and Remedial/Removal Action Update**



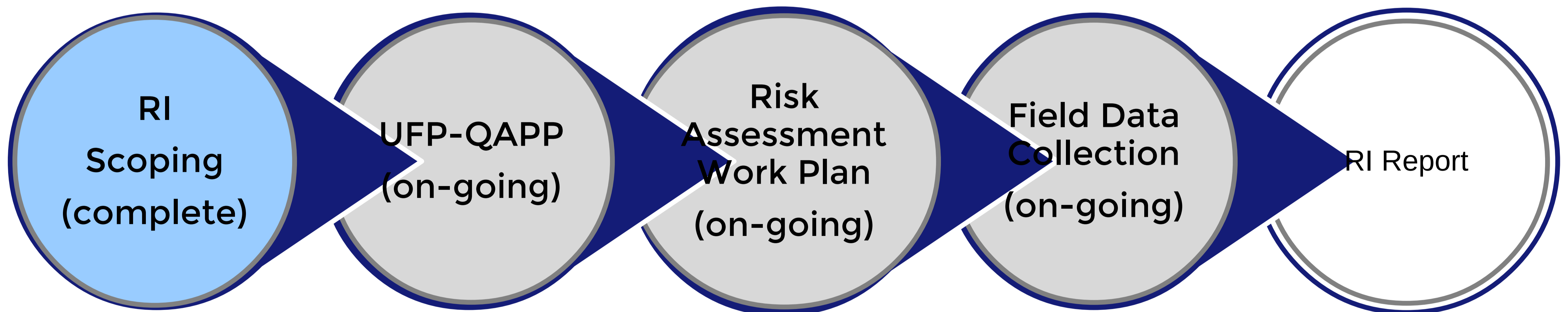
**Paula Bond  
Aerostar SES LLC  
Project Manager  
17 November 2021**



# RI and IRA Updates

## ■ Comprehensive Environmental Response Compensation and Liability Act (CERCLA) RI Process

- Continuing to work with EGLE to address comments on the Uniform Federal Policy Quality Assurance Project Plan (UFP-QAPP) and the Risk Assessment Work Plan

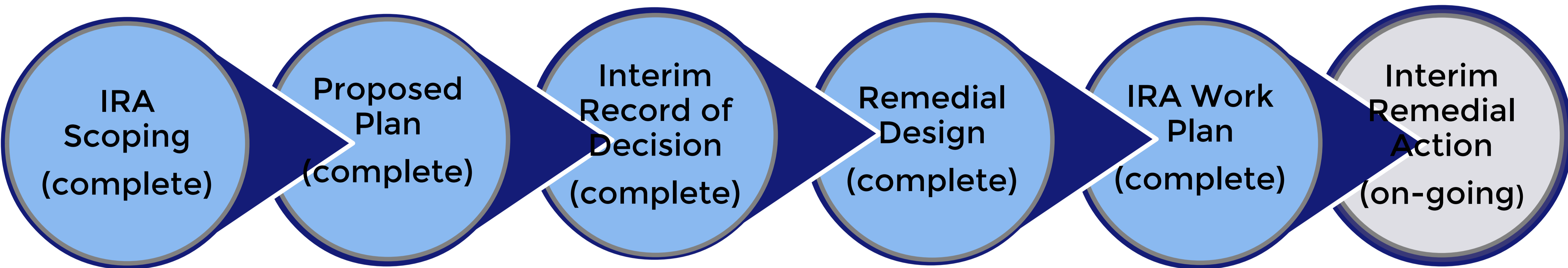




# IRA Update

## ■ CERCLA IRA Process

### ■ FT002 at Clark's Marsh IRA

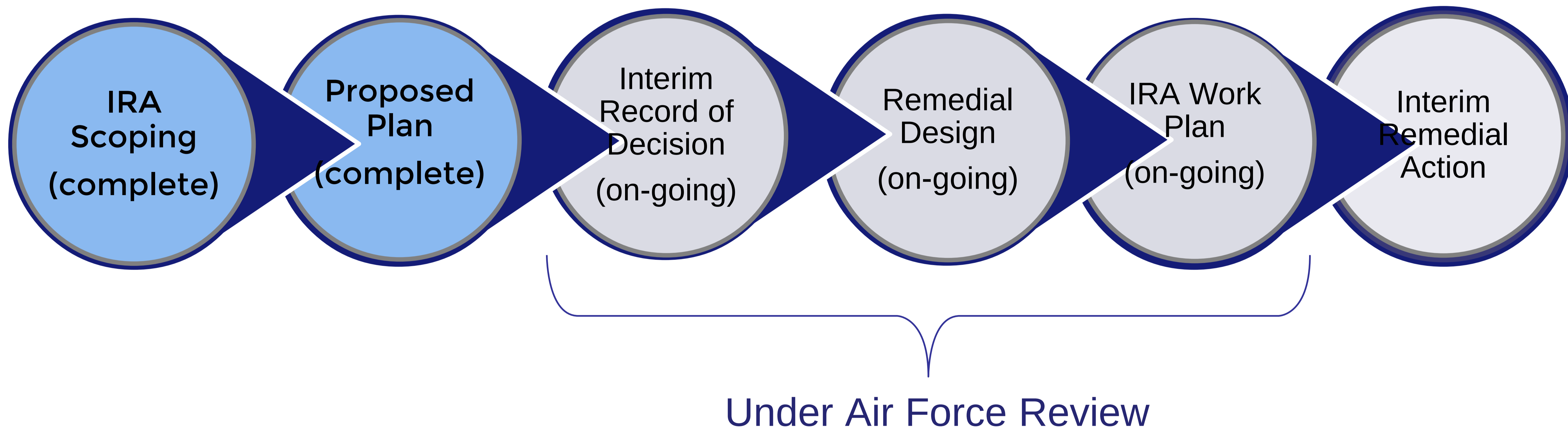




# IRA Update

## ■ CERCLA IRA Process

### ■ Van Etten Lake at Ken Ratliff Memorial Park





# RI Update

## ■ RI Work Plan (UFP-QAPP)

- Fieldwork continues as EGLE comments are addressed/resolved

### ■ Step 1

- Groundwater sampling fieldwork began on 19 July 2021
- Sampled 96 existing monitoring wells not previously sampled for PFAS
- Sampling completed on October 21, 2021

### ■ Step 2

- Soil sampling fieldwork initiated 16 August 2021
- Analyzed >1,000 soil samples across the base from 231 locations

### ■ Step 3 (on-going)

- Vertical aquifer sampling (VAS) began on 13 September 2021

- ~100 groundwater samples collected from 16 locations





# IRA Update

## ■ FT002 at Clarks Marsh IRA

- Site work began on October 14, 2021. The site was graded and prepared for construction
- Underground utilities have been installed beneath slab for building addition
- Six performance monitoring wells installed to date

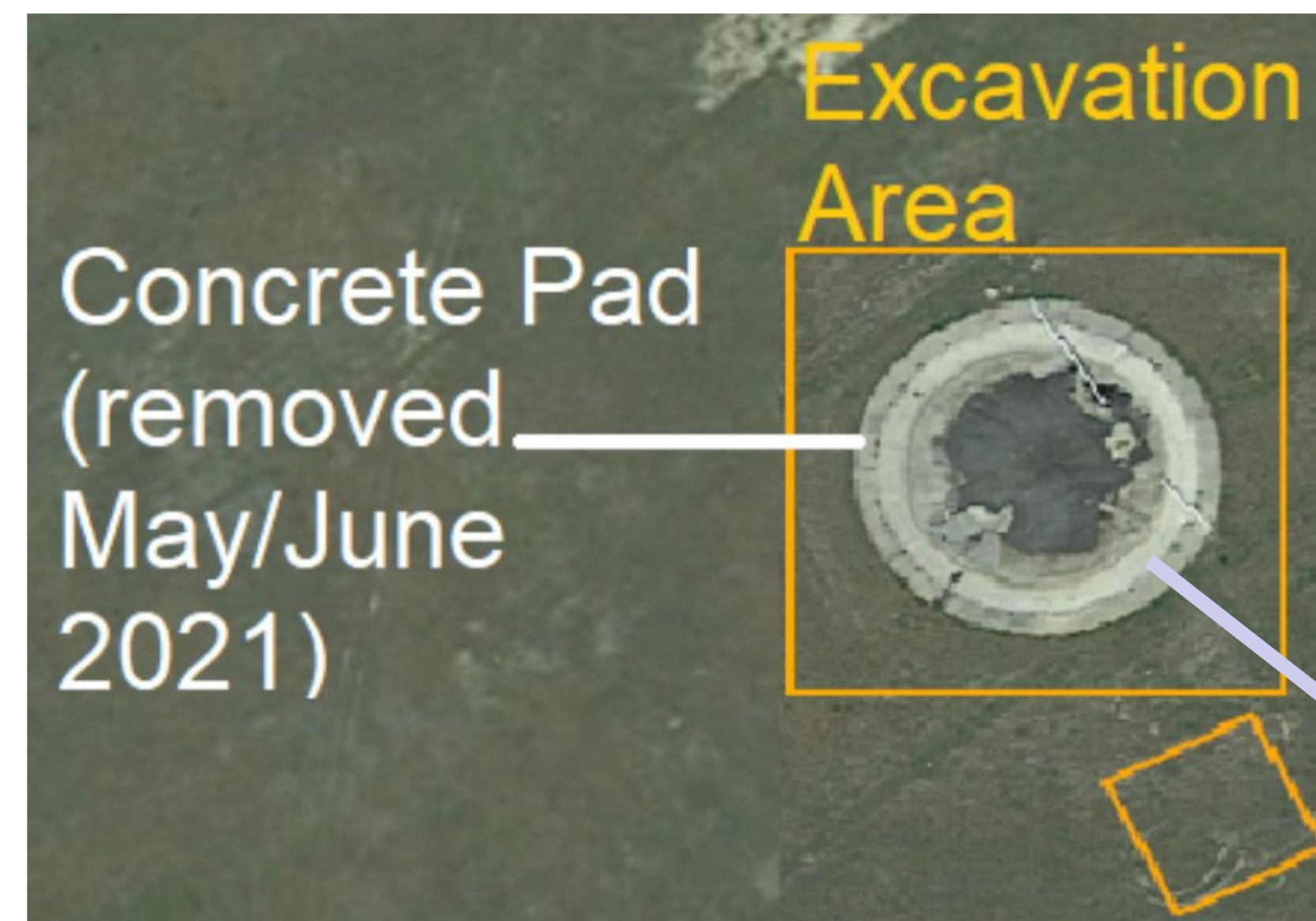




# PFAS Impacted Soil Removal at FT002

## ■ Soil Removal Action at FT002

- Work began on October 13 to remove the soil beneath the former pad where exposed soil may increase migration of PFAS to groundwater.





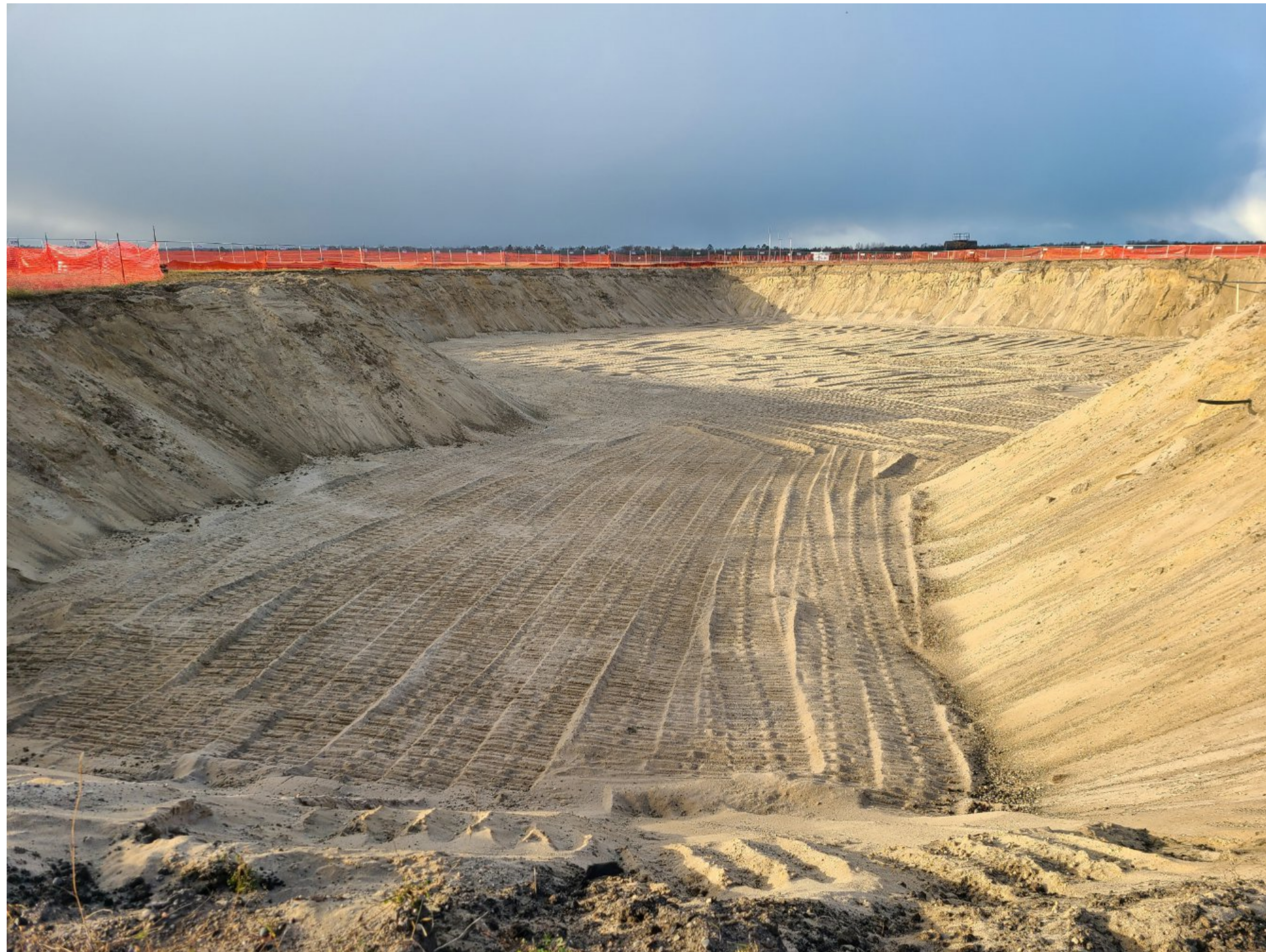
## PFAS Impacted Soil Removal at FT002

- **24,780 tons of impacted soil have been removed from FT002**
- **Soil was transported and disposed at the US Ecology hazardous waste landfill in Bellville, MI although PFAS impacted soils are not a hazardous waste**
- **Soils are being disposed in a hazardous waste landfill as a conservative disposal approach that will prevent future leaching into groundwater.**





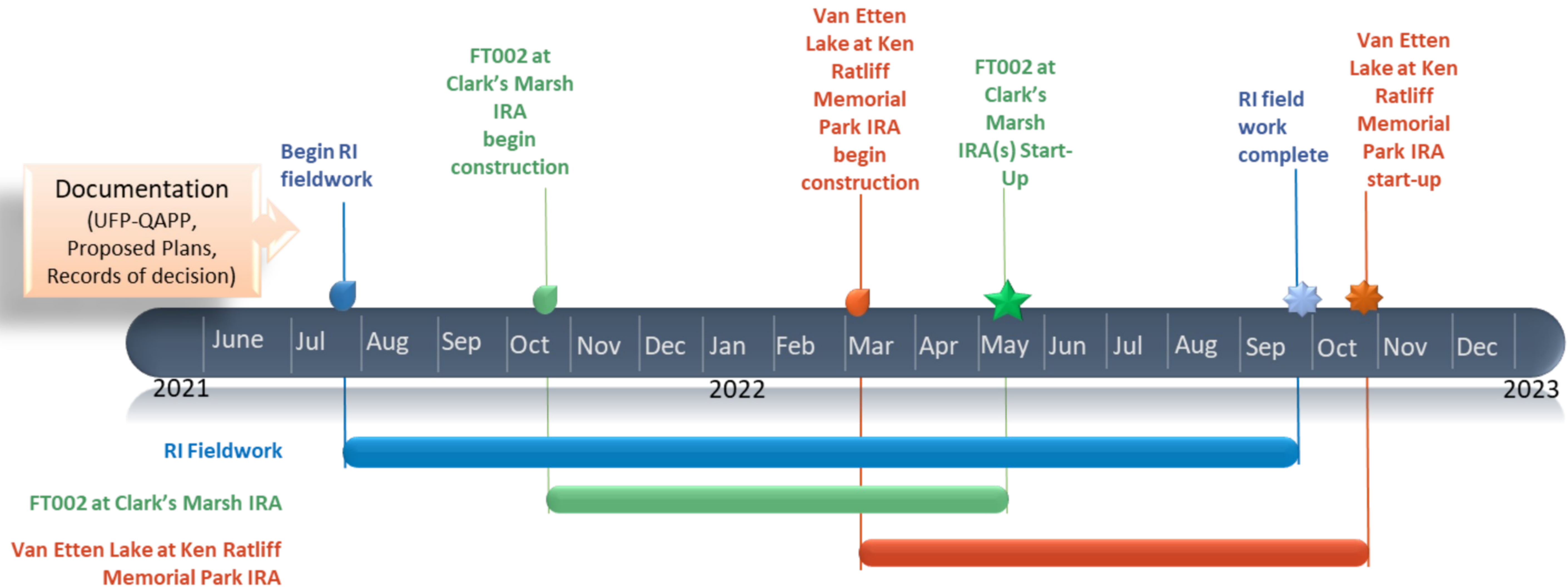
# PFAS Impacted Soil Removal at FT002





# PFAS RI/IRA Field Schedule

## RI and IRA Field Work Timeline





# *Former Wurtsmith AFB RAB*



# RAB Member Questions



# *Former Wurtsmith AFB RAB*



# Public Comment



# Public Comment Period

## Guidelines

- 01** | Indicate you want to make a comment (follow guidance)
- 02** | Wait until the facilitator states you can start your comment
- 03** | Three minute time limit
- 04** | RAB members will confer after your comment to see if a follow-up action is needed





# *Former Wurtsmith AFB RAB*



# Conclusion, Adjournment



## **FT002 Soil Removal**

### **■ Hazardous Waste Landfill, Resource Conservation and Recovery Act (RCRA) Subtitle C**

**■ Landfills are excavated or engineered sites where non-liquid hazardous waste is deposited for final disposal and covered. These units are selected and designed to minimize the chance of release of hazardous waste into the environment. Design standards for hazardous waste landfills require:**

**■ Double liner**

**■ Double leachate collection and removal systems**

**■ Leak detection system**

**■ Run on, runoff, and wind dispersal controls**

**■ Construction quality assurance program**

**■ In Michigan, hazardous waste landfills are regulated by**

# FT002 Soil Removal

## ■ Typical US Ecology Hazardous Waste Landfill

